

THE FOLLOWING IS A SUGGESTED PROCEDURE FOR APPLYING THE OPTIFLOW JUNIOR NASAL CANNULA (OPT312, OPT314, OPT316, OPT318):

FITTING

1 Setup

Set up the gas supply, humidifier and breathing circuit.

2 Select Cannula Size

- Prongs should not fill the nares and a **clear gap** should be visible around each prong.
- The sizing chart on the following page can be used as a guide.
- If the infant can fit two sizes, select the smaller size.

3 Prepare Skin

Ensure infant's face is clean and dry. Follow your hospital's protocol for skin preparation.

4 Connect to Gas Source

Connect the cannula to the gas source.

Tip: Place hand close to nasal prongs to ensure that there is gas flow exiting the prongs.

5 Remove First Wigglepad Tabs

Without touching the adhesive, remove the first backing tabs from Wigglepads, leaving the second backing tabs in place.


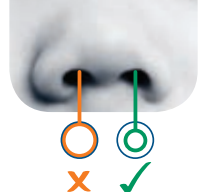



6 Place Cannula

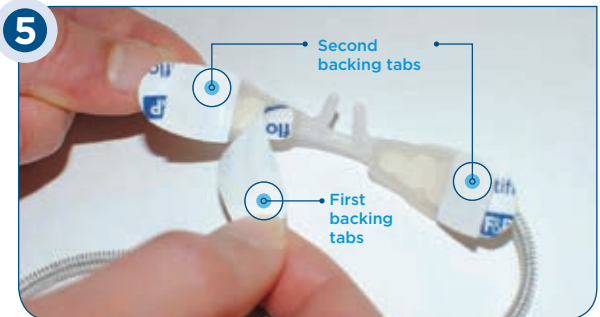
- Once applied, the cannula bridge may move away from the septum as the cheeks relax. Refer to Placement Checks for correct positioning during use.
- Hold the ends of the pads and apply slight tension to the cannula.
- Position the prongs as far into the nares as possible such that the cannula bridge **rests just underneath the septum**.
- Position horizontally across the face and stick Wigglepads onto the cheeks.

7 Secure Cannula

Remove the second backing tabs and stick the Wigglepads onto the infant's cheeks. Ensure the Wigglepads are well adhered to the face.

2 SELECT CANNULA SIZE

SIZE RANGE	ENSURE GAP AROUND PRONGS
 Premature Size	
 Neonatal Size	
 Infant Size	
 Pediatric Size	



PLACEMENT CHECKS

1 Sensitive Septum

Check that the nasal cannula does not apply any pressure to the infant's septum. Ensure a **slight gap** is visible between the cannula and the septum. Adjust cannula position if required.

2 Cheeky Check

- Gently squish the infant's cheeks to check the prong placement in the nares.
- If prongs come out of the nares, adjust cannula further into the nares according to instructions. Repeat the cheeky check.

3 Tidy Tubing

Ensure that the baby is not lying on the tubing and that the flow path is maintained.



CANNULA REMOVAL/ADJUSTMENT

Always readjust cannula while patient is supine.

To temporarily remove or adjust the cannula on the Wigglepads:

- Place fingertip on the outside edge of Wigglepad.
- Gently peel the cannula pad away from the Wigglepad starting from the outside and working in towards the infant's nose.
- To adjust, reposition prongs into nares and place cannula back onto Wigglepads.



WIGGLEPAD REMOVAL/ REPLACEMENT

Lift edge of the Wigglepad and using a **wet cloth** wipe the skin and underside of the Wigglepad while gently peeling Wigglepad from face. Refer to sizing chart for Wigglepad spares.

Note: Attach spare Wigglepad to cannula prior to applying to face.



SIZING CHART

F&P OPTIFLOW JUNIOR		APPROX WEIGHT (KG)											SPARE WIGGLEPADS
OPTIFLOW JUNIOR NASAL CANNULA	ITEM CODE	2	4	6	8	10	12	14	16	18	20	22	
Premature Size	OPT312	Max. flow 8 L/min											OPT010
Neonatal Size	OPT314	Max. flow 8 L/min											OPT012
Infant Size	OPT316	Max. flow 20 L/min											
Pediatric Size	OPT318					Max. flow 25 L/min							

IMPORTANT: Always refer to the user instructions supplied with the product for full set up instructions, warnings, contraindications and explanations.