

FITTING INSTRUCTIONS

**Atom V808
strapping of patient
harness on the
Stryker stretcher**



INTRODUCTION

This manual provides the fitting instructions and procedures for the:

1. DHS 590 - baby harness (suitable for Draeger and Atom Cots)

This product is designed and manufactured by DHS Pty Ltd. This manual is a guide only and further evaluation of safe operational use is the responsibility of the equipment owner.

WORK HEALTH AND SAFETY

This manual is not a substitute for compliance with relevant infection control and Work Health and Safety Standard Operating Procedures of service providers.

DISCLAIMER AND LIMITATIONS

This should be seen only as a technical guide for the use of the products listed above. Users of these products should confirm that procedures presented in this manual do not conflict with the policies or procedures of your own organisation or service.

Personnel should be fully trained in the use of these products before attempting to use this equipment with a patient.

It is prohibited to use this manual and its contents for any other purpose without the written consent of DHS Pty Ltd.



Always use appropriate manual handling techniques and devices, when lifting and moving any patient.

OVERVIEW / PURPOSE

This is a guide to fixing the DHS patient Harness to the Atom V808 on the Stryker Power Pro

This restraint Harness is used to safely restrain the patient inside the V808 throughout the transport process.



THE Equipment

1. 590V&D baby harness
2. Two extra yellow straps



FITTING THE BABY HARNESS RESTRAINT

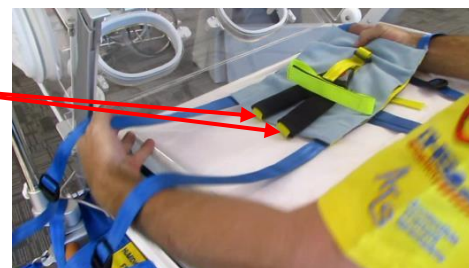
Lay out the baby harness as shown

Open the lid of the cot

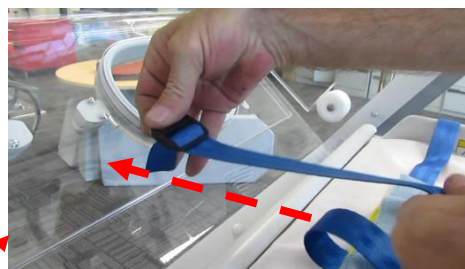


Pick up the harness and place it in the cot with the shoulder straps towards the head end of the stretcher / cot.

Layout out the belts to each end and each side.



The belt that goes to the “opposite” side needs to have the buckle slipped off so that the belt can be “fed” under the lid to the outside of the cot.



Refit the buckle to the belt outside the cot and slide it up the belt as far as possible.

Then leave the two side straps until the cot is loaded onto the Stryker stretcher.



Move onto attaching the belts on the ends around the carry handles.

Tension up as required.



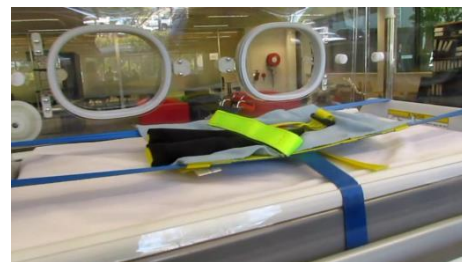
Once the Atom V808 is loaded onto the Stryker stretcher and secured, run the side straps of patient harness around the handles of Stryker stretcher.



Without the baby in the harness the harness may sit slightly up off the mattress.

Refer to separate operator’s manual for restraining baby in the harness.

The lid of the cot can be closed over the harness straps with ease.



CLEANING HARNESES

After each use on a patient, the baby restraint harness should be laundered.

It is recommended a spare safety harness is employed while the previous baby harness is laundered.

It is **recommended** to only use warm soapy water to wash and clean the harness.

Disinfectant and cleaners containing bleach, phenolics, or iodines are **not recommended**.

MAINTENANCE SCHEDULE

Operators should routinely inspect and test the correct operation of the harness prior to use, noting any fraying of the belts. Damaged harnesses must be withdrawn from service. Routine inspections should occur at intervals not greater than 3 months.