

Locking Compression Plate. Combine without Compromise.

LCP combi-hole:
angular stable locking and/or
compression

Angular stability independent
of bone quality

Support of biological
osteosynthesis even in the
case of complex
fractures and osteoporosis



LCP Locking Compression Plate.

Combine without Compromise.

LCP Locking Compression Plate

Angular stable support of fragments regardless of bone quality

Reduces the risk of primary and secondary loss of reduction even under high dynamic loading

Reduced impairment of periosteal blood supply due to limited plate-periosteum contact

Favorable hold also in osteoporotic bone and in multiple fragment fractures

Angular stable implant



- Stability of the implant regardless of bone quality; supply stability slightly dependent on bone quality
- Locking screws can be placed in each hole of the plate



Because the screws are tightly locked in the plate:

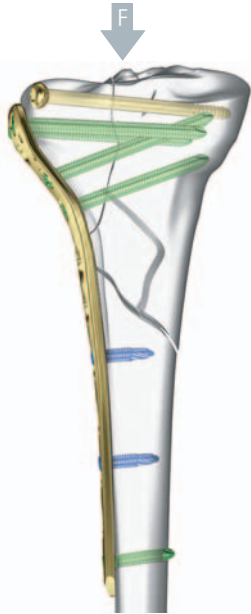
- There is no tension on the bone
- Compression is eliminated between the plate and bone
- The periosteum is undamaged and circulation is retained

The plate does not have to be precisely shaped to the bone to provide stability. Minimally invasive surgery (MIS) is easy to perform:

- The soft tissue and the wound hematoma are treated gently
- Optimum circulation is maintained



Reduction maintained under a load

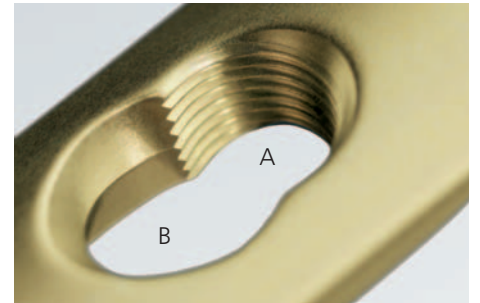


- Stable bridging of comminuted fractures
- The stable plate-screw connection decreases secondary loss of reduction in the epiphyseal and metaphyseal regions
- The screws are locked in the plate, and the physiological load (F) is transferred from the bone to the plate



- The fragments are fixed in their reduced position without regard to the plate model (internal fixator)
- The bone fragments are reliably fixed in the position assumed at the time the screws are locked

LCP combi-hole



A Stable plate-screw connection

- Locking screws reduce screw loosening
- Excessive torque is not applied to the cortical bone
- The conical screw head makes it easy to insert the screw

B Compatibility

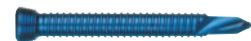
- The proven dynamic compression hole allows you to use all standard screws

Self-tapping locking screws



- Use after precisely measuring the length (metaphysis)
- Monocortical or bicortical use
- Not necessary to separately tap thread

Self-drilling locking screws



- Use without having to precisely measure the length (diaphysis)
- Only for monocortical use
- Tapping and predrilling are unnecessary

Standard screws



- Dynamic compression is created by the eccentric insertion of the standard screws (analogous to LC-DCP)

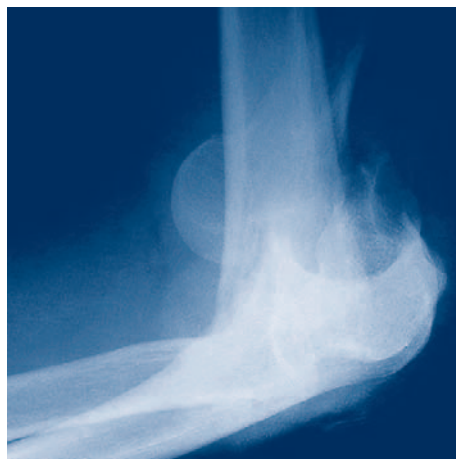


LCP Locking Compression Plate.

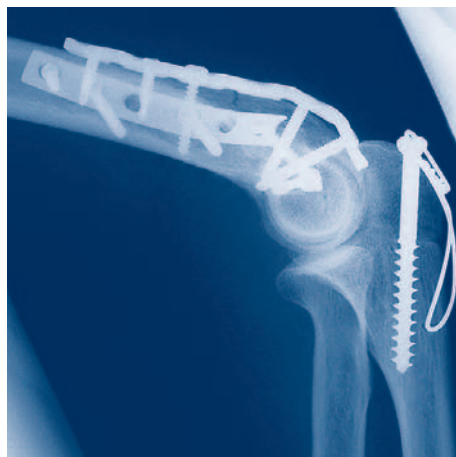
Combine without Compromise.

Positive influence on healing

- The locking screws enable the anatomically-preformed plates to be fully effective
- The use of LCP implants enables early and active mobilization, even in the case of complex epimetaphyseal fractures and osteoporosis
- With its line of LCP implants, Synthes offers a large selection of specially adapted plates for a broad spectrum of indications



Preoperative



Postoperative



4 weeks postoperative

Case study: 55-year-old patient with AO Type 13-C1.2 fracture, treatment with LCP double plate technique (source: Dr. Ch. Ryf, Hospital Davos)

Combine without Compromise. Locking Compression Plate.

Clavicle

LCP Clavicle Hook Plate



Humerus

LCP Proximal Humerus Plate/
PHILOS



LCP Distal Humerus Plate



LCP Metaphyseal Plate for the
distal medial humerus



Radius/Ulna

LCP Olecranon Plate



LCP Distal Radius System 2.4

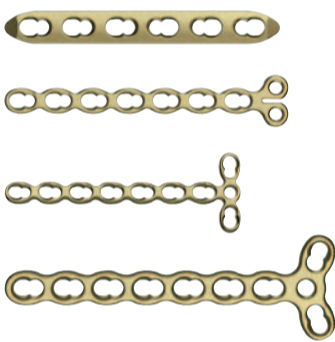


Wrist Fusion Plate



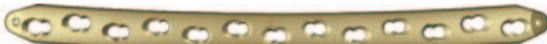
Hand

LCP Compact Hand



Femur

LCP Broad Curved



LCP Distal Femur Plate



Tibia

LCP Proximal Tibia Plate 3.5 and 4.5



Tomofix (for osteotomies)



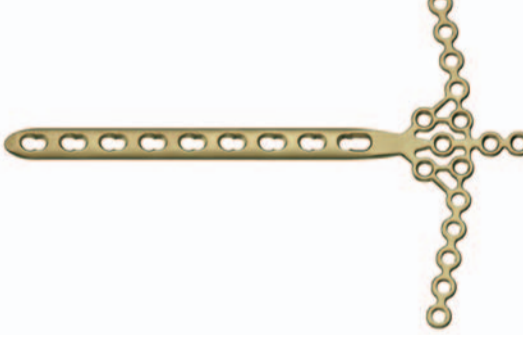
LCP Proximal Lateral Tibia Plate



LCP Distal Tibia Plate



LCP Pilon Plate

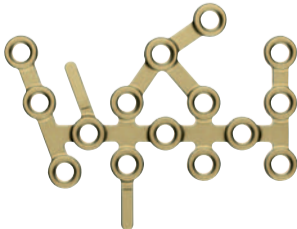


LCP Metaphyseal Plate for the
distal medial tibia



Foot

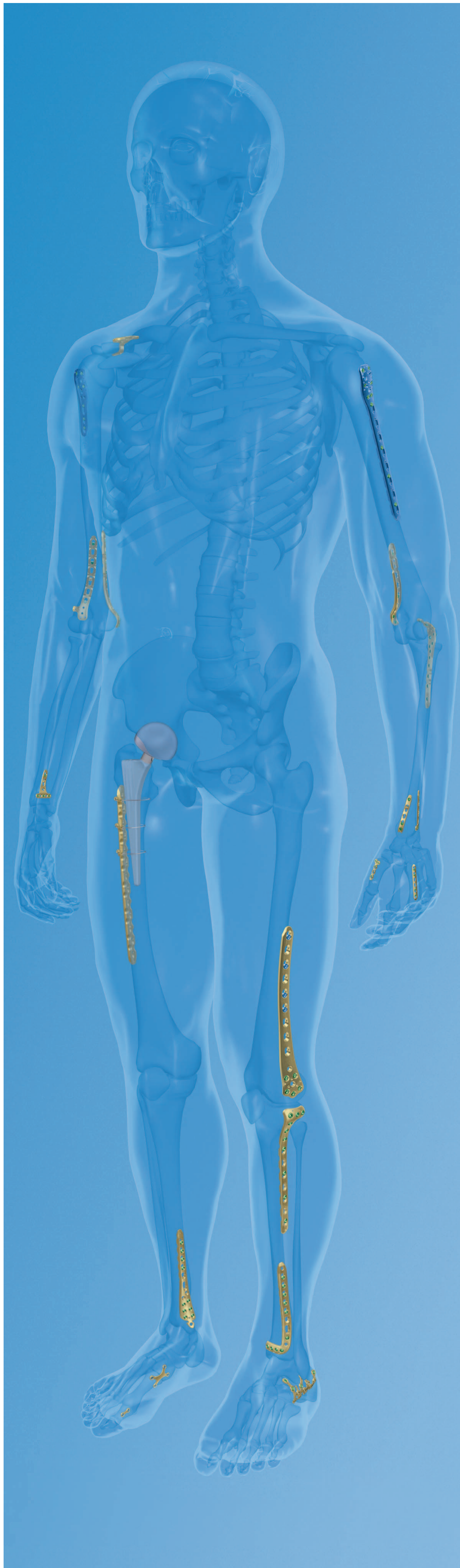
Calcaneus Locking Plate*



X Locking Plate*
2-Hole Locking Plate*



LCP Condylar Plate



*no combi-hole
All plates are available in stainless steel.