

From a little ACORN the MIGHTY OAK grows.

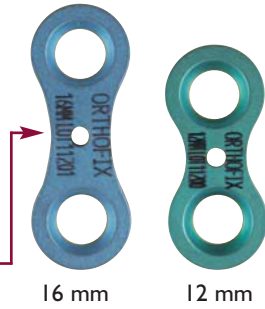
Guided growth can harness the robust potential of a child's physis to correct angular deformities. The new eight-Plate from Orthofix is a minimally invasive, secure implant for hemi-epiphysiodesis that allows speedy post-operative recovery with immediate weight bearing. The eight-Plate uses two holes and diverging screws to function like a hinge and avoid physis compression. It gently guides the natural growth process and restores limb alignment without the need for invasive osteotomy. With gentle guidance, your patients - like the little acorn - can achieve their full potential. 🌰



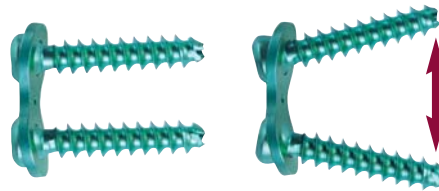
- Simple out-patient procedure with no cast required.

- Contoured two-hole plate bends for anatomic fit and flexibility during unilateral growth.

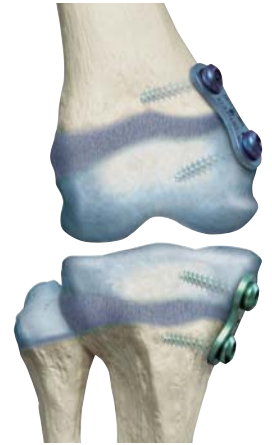
- Central pilot hole for accurate placement over the physis.



- Diverging screws function like a hinge to gently guide natural growth.



- Fully threaded cannulated screws resist pull out forces and allow easy removal after treatment.



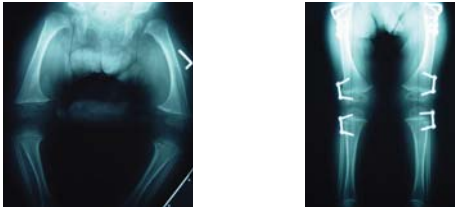
Indications

The eight-Plate is an angular deformity correction plate, indicated for gradual correction of pediatric deformities in upper and lower extremities:

- cubitus varus (post supracondylar fracture)
- knee valgus, varus, oblique plane, flexion deformity, recurvatum
- ankle valgus

Case Study

2 1/2 year old with skeletal dysplasia and multi-level varus deformities that would otherwise have required six staged osteotomies and several casts to correct.

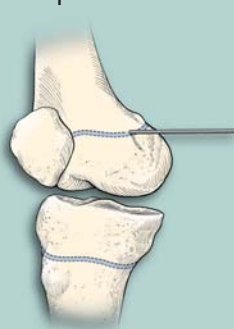


Patient underwent simultaneous proximal femoral osteotomies, combined with guided growth of the distal femora and proximal tibias.

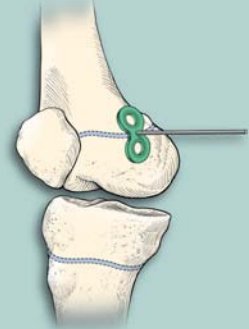
One year later the hardware was removed.

Operative Brief

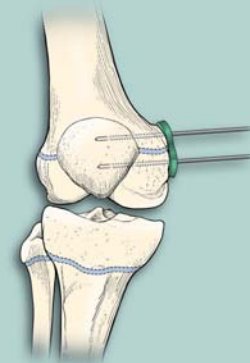
1. Insert localizing pin in physis and verify position with fluoroscope.



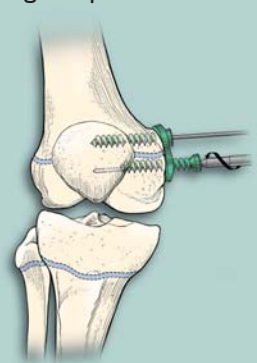
2. Apply conformed 8-Plate over pin.



3. Insert two parallel guide pins: one into the epiphysis and one in the metaphysis.



4. Drill 24 to 32 mm with the cannulated drill bit and insert two cannulated self tapping screws. Remove guide pins.



Operative brief and case studies provided by Peter M. Stevens, M.D., University of Utah

Ordering Information

Part #	Description	Length
GP200CE	eight-Plate, Guided Growth Plate	12 mm
GP400CE	eight-Plate, Guided Growth Plate	16 mm
GP224CE	eight-Plate, Guided Growth Screw	24 mm
GP432CE	eight-Plate, Guided Growth Screw	32 mm
I101301	Cannulated Drill Bit, 3.2mm Dia.	150 mm
I3715	K-Wire, 1.5 mm Dia.	150 mm
I1116	Drill Guide, 80 mm	
I1006	Drill Stop, 3 mm	
I0012	Allen Wrench, 3 mm	
W12071	Threaded Tip Guide Wire	
GP200KCE	eight-Plate, Guided Growth Plate Kit, includes 12mm eight-Plate and 24 mm screws, non-sterile	
GP400KCE	eight-Plate, Guided Growth Plate Kit, includes 16mm eight-Plate and 32 mm screws, non-sterile	
GP510CE	Screwdriver, eight-Plate 3.5 mm cannulated	
GP500CE	Steri-Tray Kit	
GP501CE	Empty Steri-Tray	

Your Distributor is: