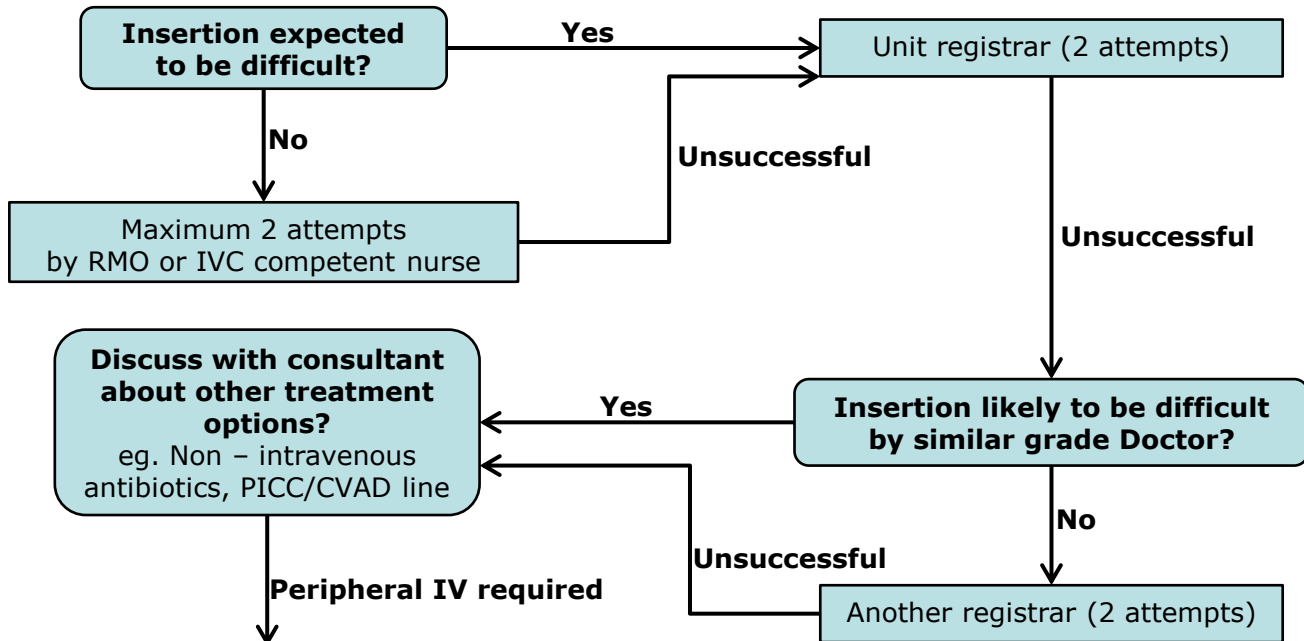


Assistance with IV insertion



Insertion expected to be difficult?

Yes

Unit registrar (2 attempts)

No

Maximum 2 attempts by RMO or IVC competent nurse

Unsuccessful

Unsuccessful

Discuss with consultant about other treatment options?
eg. Non - intravenous antibiotics, PICC/CVAD line

Yes

Insertion likely to be difficult by similar grade Doctor?

No

Unsuccessful

Another registrar (2 attempts)

Peripheral IV required

1. **Advance bookings**
2. **Mon-Fri 0730-1730** Anaesthetist in charge (ASCOM 52000)
3. **After hours/PH:** PICU reg (ASCOM 52327)