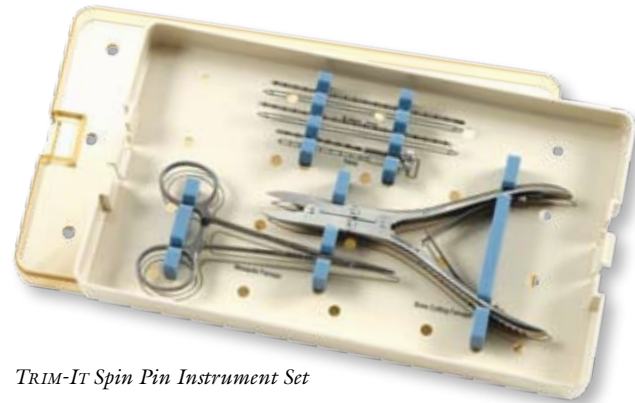


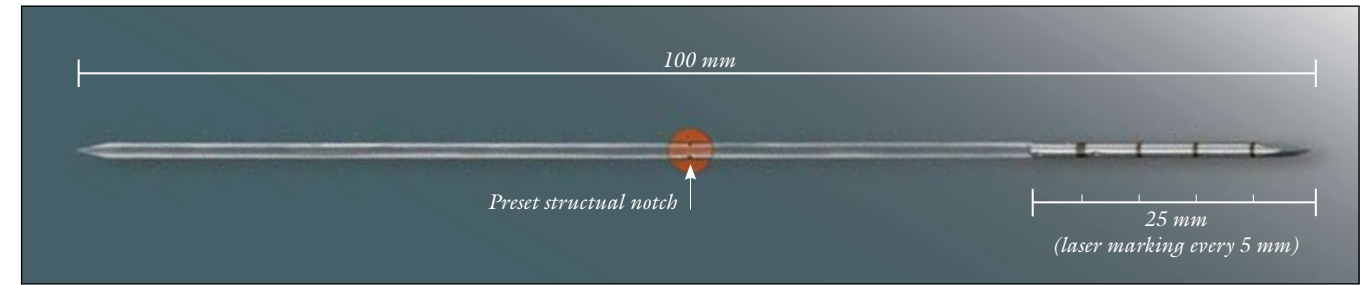
## TRIM-IT Spin Pin Fixation

...offers the surgeon the advantage of exact sizing PIPJ implants every time, without leaving pin material across the DIPJ

A second generation bioabsorbable TRIM-IT Drill Pin, the TRIM-IT Spin Pin takes the guess work out of pin placement for PIP joint fusions. The TRIM-IT Spin Pin's laser marked metal trocar tip acts as a drill and measuring device, providing for an exact fit of the bioabsorbable implant. This unique system gives the surgeon the ability to fuse the PIP joint without leaving metal or bioabsorbable material across the distal phalanx.



TRIM-IT Spin Pin Instrument Set



Preset

### Advantages

- Exact sizing every time. Drill, measure and cut the pin the exact length of the proximal and middle phalanx (PIPJ fusions)
- Distal pin migration minimized due to mobile DIP joint
- Pin material allows bending the toe after implantation ("flexed toe fusion")
- Superior shear strength compared to other absorbable pins
- Clinical outcomes equivalent to metal pins

### Indications

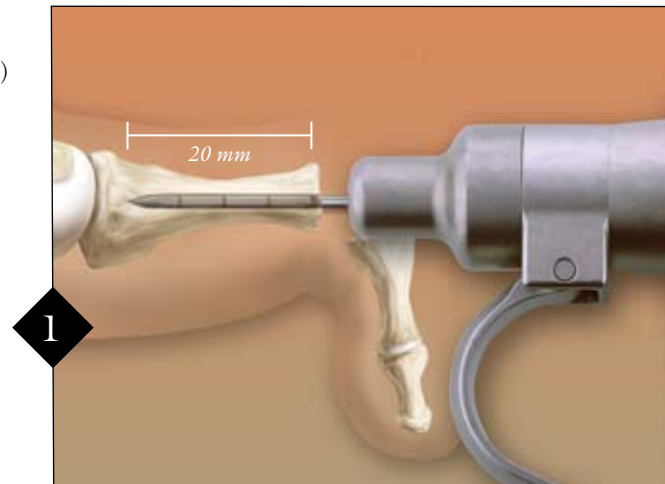
- Arthroplasty and/or fusion of the proximal, middle and distal phalanx of the toe
- Fusions of the phalanges and metacarpals

### Bioabsorbable Experience

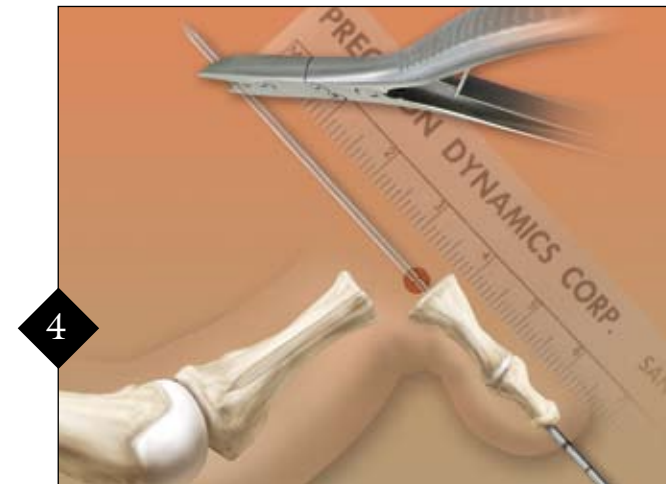
- Over 1,000,000 bioabsorbable implants successfully placed since 1994
- More surgeons worldwide trust Arthrex for their bioabsorbable implants

### Formula

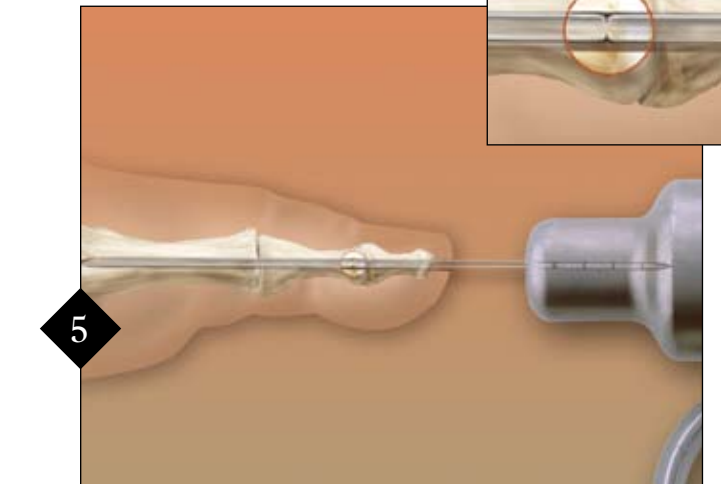
- 100% PLLA (poly(L-Lactide))
- Documented material safety



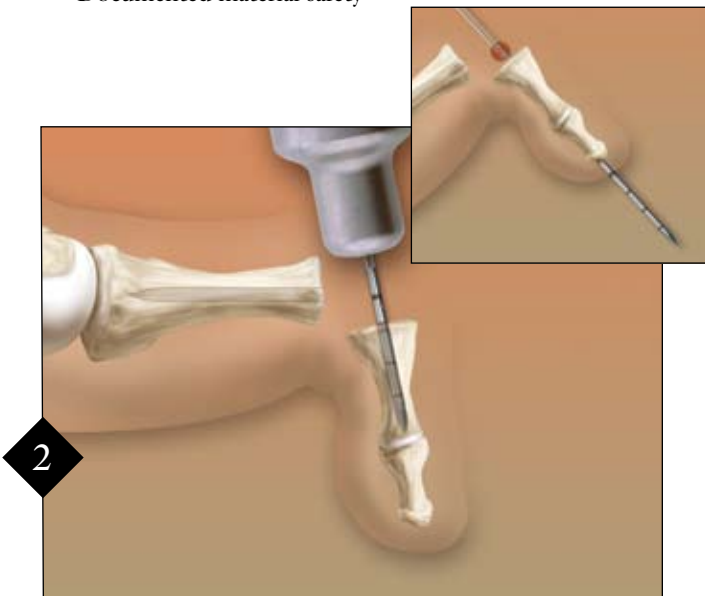
Resect the joint with an oscillating saw or rongeur. Seat the bio end of the pin of the Trim-It Spin Pin in the K-Wire driver so that the laser marked metal portion is the only section of the pin exposed, as shown. **OPTION** - If hard bone is encountered, use one of the laser marked K-Wires in the instrument set to "predrill" the pilot hole. Advance until metal tip contacts the proximal cortical wall of the proximal phalanx. **Measure and note depth** using 5 mm laser marks. In this illustration the depth is measured at 20 mm.



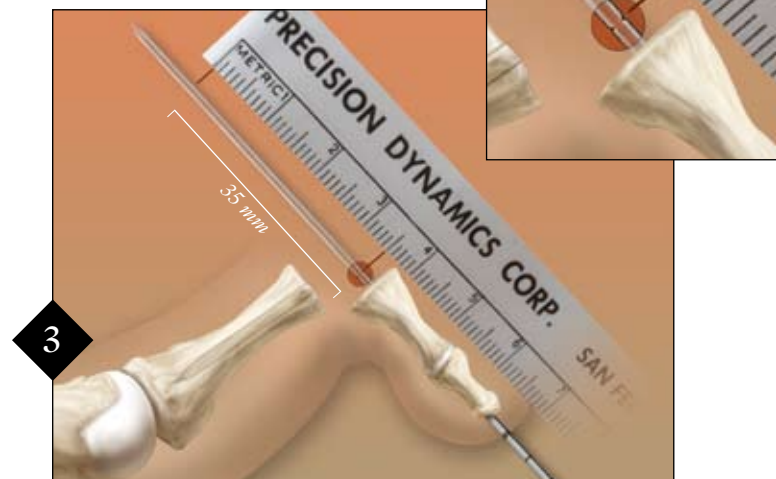
Cut the pin with the double action Bone Cutting Forceps, leaving a tapered end for easy insertion in the proximal phalanx.



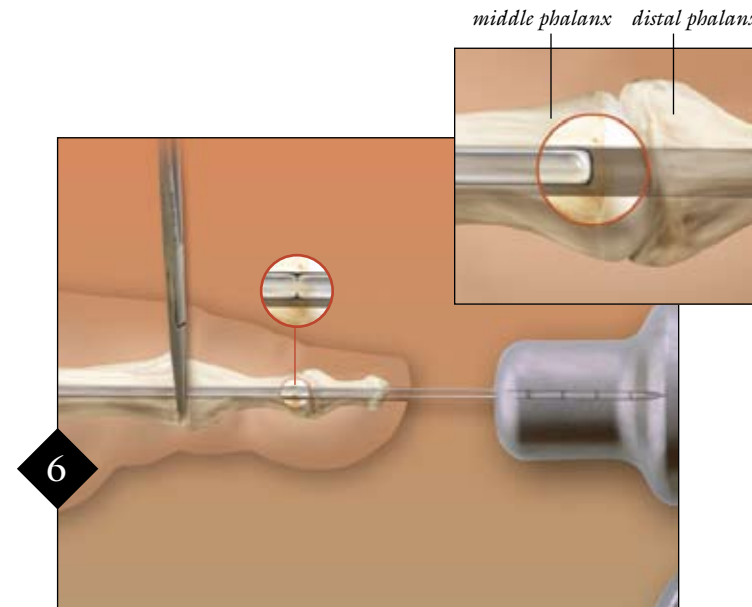
Seat the metal end of the pin in the K-wire driver and insert until the pin tip meets the proximal cortex of the proximal phalanx. **Inset:** The preset structural notch should now be just proximal to the DIP joint.



Drill through the middle phalanx, up to, but not through the DIP joint. **Measure and note depth.** In this illustration the length of the middle phalanx is 15 mm. **Inset:** After recording middle phalangeal depth, drill the pin through the distal phalanx, leaving the "notch" on the bio portion of the pin exposed between the PIP joint.



Add the length of the proximal phalanx to the length of the middle phalanx (ex. 20 mm + 15 mm = 35 mm) to determine how much to trim off of the distal end of the pin. **Note:** Distance (ex. 35 mm) should be measured from the notch toward the bio end of the pin. **Inset:** Preset structural notch is highlighted.



Using the Mosquito Forceps from the AR-4156S instrument set, hold the pin firmly at the PIP joint. With the K-wire driver engaged with the metal end of the pin, start the driver without trying to advance the pin. The TRIM-IT Spin Pin will automatically separate at the preset structural notch. Bend the toe to normal anatomic position. The repair is complete.



**TRIM-IT Spin Pin** AR-4156DS

- 2.0 mm x 100 mm implant
- Measuring gauge

**TRIM-IT Spin Pin Instrument Set** AR-4156S

- Bone Cutting Forceps
- Optional predrill K-wire (2)
- Tamp
- Mosquito Forceps



Arthrex, Inc.  
1370 Creekside Boulevard, Naples, Florida 34108-1945 • USA  
Tel: 239-643-5553 • Fax: 239-598-5534 • Web site: www.arthrex.com

Arthrex GmbH  
Liebigstrasse 13, D-85757 Karlsfeld/München • Germany  
Tel: +49-8131-59570 • Fax: +49-8131-5957-565

Arthrex Iberoamérica  
Howard Hughes Tower, 6701 Center Drive West, Suite 550, Los Angeles, California 90045 • USA  
Tel: 310-670-6080 • Fax: 310-670-6087

Arthrex S.A.S.  
5 Avenue Pierre et Marie Curie, 59260 Lezennes • France  
Tel: +33-3-20-05-72-72 • Fax: +33-3-20-05-72-70

Arthrex Canada  
Lasswell Medical Co., Ltd., 405 Industrial Drive, Unit 21, Milton, Ontario • Canada L9T 5B1  
Tel: 905-876-4604 • Fax: 905-876-1004 • Toll-Free: 1-800-224-0302

Arthrex GesmbH  
Triesterstrasse 10/1 • 2351 Wiener Neudorf • Austria  
Tel: +43-2236-89-33-50-0 • Fax: +43-2236-89-33-50-10

Arthrex Bvba  
Technologiepark Satenrozen, Satenrozen 1a, 2550 Kontich • Belgium  
Tel: +32-3-2169199 • Fax: +32-3-2162059

Arthrex Ltd.  
Unit 16, President Buildings, Savile Street East, Sheffield S4 7UQ • England  
Tel: +44-114-2767788 • Fax: +44-114-2767744

Arthrex Hellas - Medical Instruments SA  
103, Ethnikis Antistasseos str., N. Psychico 154 51 Athens • Greece  
Tel: +30-210-8079980 • Fax: +30-210-8000379

Arthrex Sverige AB  
Turbinvägen 9, 131 60 Nacka • Sweden  
Tel: +46-8-556 744 40 • Fax: +46-8-556 744 41

Arthrex Korea  
Rosedale Building #1137, 724 Sooseo-dong, Gangnam-gu, Seoul 135-744 • Korea  
Tel: +82-2-3413-3033 • Fax: +82-2-3413-3035

Arthrex Mexico, S.A. de C.V.  
Insurgentes Sur 600 Mezanine, Col. Del Valle Mexico D.F. 03100 • Mexico  
Tel: +52-55-91722820 • Fax: +52-55-56-87-64-72

Arthrex Swiss AG  
Müllerenstrasse 3, 8604 Volketswil • Switzerland  
Tel: +41-43-399-45-20 • Fax: +41-43-399-45-29

*This description of technique is provided as an educational tool and clinical aid to assist properly licensed medical professionals in the usage of specific Arthrex products. As part of this professional usage, the medical professional must use their professional judgment in making any final determinations in product usage and technique. In doing so, the medical professional should rely on their own training and experience and should conduct a thorough review of pertinent medical literature and the product's Directions For Use.*

*Developed in conjunction with Gerard Bourke, Melbourne, Australia and Dr. Luke Cicchinelli, Greenville, NC.*

© Copyright Arthrex Inc., 2007. All rights reserved. LT0459A



## Hammertoe PIP Joint Arthrodesis using TRIM-IT Spin Pin™ Fixation

### Surgical Technique



Standard Fusion



Flexed Toe Fusion

# Hammertoe PIP Joint Arthrodesis