

Your Cardiologist has recommended that you transfer to an Adult Cardiology Centre. Although you may feel well, it is essential to link you with an adult hospital for ongoing monitoring of your condition for as long as this is necessary and possibly throughout your adult life.

Information in this brochure is designed to provide you with helpful information and to provide answers to common questions.

Please insure that if you do not receive adequate information once transferred, that you ask Monash staff.



Getting there

Transport

Limited parking is available next to the centre; otherwise car parking in the hospital grounds is available. Production of your appointment card reduces your car-parking fee.

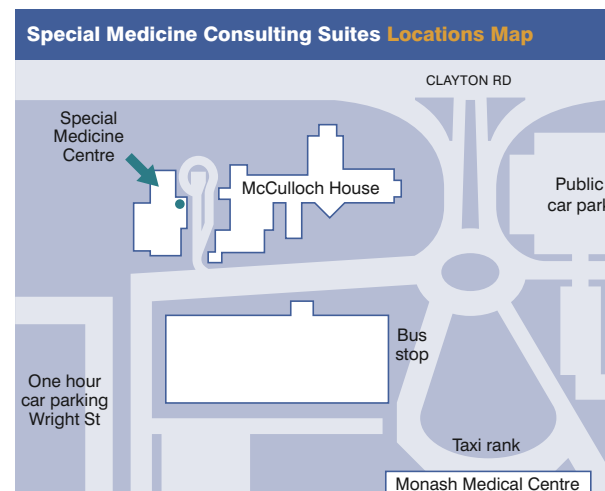
A Taxi rank is located out the front of the hospital.

Buses

- Route 733 from Oakleigh to Box Hill
- Route 703 Middle Brighton to Blackburn
- Route 631 Waverly Gardens Shopping Centre to Southland run past the hospital along Clayton Road.

Contact person

If you have not received an appointment within three months, please contact the Special Medicine Centre on (03) 9594 4175.

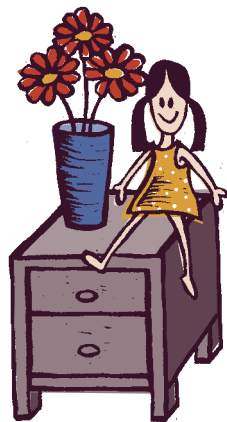


Transferring to Cardiology Services at Monash Medical Centre

Clayton Campus
246 Clayton Road, Clayton



Grown-Up Congenital Heart Disease Clinic (GUCH Clinic) Monash Medical Centre (MMC)



Where

The Congenital Heart Disease Clinic is held at Monash Medical Centre's Special Medicine Centre. The Special Medicine Centre is located behind McCulloch House in the Hospital grounds. Please refer to the map on back page.

When

The clinic is held on the first Wednesday of each month in the afternoon. This Clinic will increase in size and frequency as demand grows.

Attending Cardiologists

Prof. Sam Meneham, Dr T.H. Goh, Dr Lance Fong and Dr Sarah Hope

Adult Cardiologists

Prof. Rick Harper and Dr David McGaw
(who have a special interest in congenital heart conditions)
Dr Jeff Alison
(who have a special interest in arrhythmias in congenital heart conditions)

Consultant Obstetricians

Dr Christine Tippett and Prof. Ewan Wallace

Clinic coordination

Reception staff runs this clinic.

Clinic enquiries

Outpatients appointments (03) 9594 4175

Before your first visit to the new centre, you will require

- 1 A referral from your Paediatric Cardiologist will be made directly to the Grown-Up Congenital Heart Disease Clinic (GUCH Clinic) at the MMC with attached documentation. This referral will only last for 3 months from the initial appointment at MMC, there after you will need to obtain another referral from your family Doctor (GP). A GP referral will last for 12 months or longer if your GP specifies. This clinic is bulk billed and you will need your Medicare card at each appointment.
- 2 A copy of the referral will also be sent to you.
- 3 Your appointment will be sent out directly from the MMC to you.
- 4 The appointment will be organised according to the urgency of the referral enabling the MMC Clinic to meet up and discuss with you your ongoing care and frequency of further appointments, which will be decided on the day.
- 5 Patients living in the metropolitan area will have an ECG and an Echocardiogram on a separate day (usually two weeks prior to appointment).
- 6 Patients residing in the country area (outside the metropolitan area) will have all their required tests on the day of appointment. This is organised at Monash once the referral has been received.
- 7 Patients residing over 100kms away from Melbourne will be able to obtain assistance through the Victorian Patient Travel Assistance Service (VPTAS). Forms may be obtained through your local Centrelink or Department of Human Services Offices in your region, as well as your GP.

DHS Regional Offices

To obtain VPTAS forms call:

| | |
|-----------|----------------|
| Barwon | (03) 5226 4540 |
| Hume | (03) 5722 0555 |
| Loddon | (03) 5434 5555 |
| Gippsland | (03) 5177 2500 |
| Grampians | (03) 5352 0103 |

An important final word...

Transferring to an adult hospital is a sign that you are growing up and starting to manage your own appointments, prescriptions and medications and depending less on your parents/caregivers. It is important for both you and your parents to recognise this as you will find that staff working in adult hospitals will generally focus on you, the patient and less on other adults accompanying you.

Please make certain that you ask lots of questions and if you are not too sure about the answer, ask again! A good tip is to write down questions before your visit to the clinic.

For further information about transferring to adult care

Talk to Bronwyn Norman, RCH Cardiology Department, talk to your doctor, or talk to the RCH Transition Officer, Felicity Sloman on 9345 4858 or look at the website:

www.rch.org.au/transition

We do hope this information is helpful and wish you well on your journey into adult life.

Staff of Cardiology Department
The Royal Children's Hospital

